

01202 683444

Orchard Plaza, 41 High Street
Poole, Dorset, BH15 1EG

www.quayliving.co.uk



Woodstock Road, Poole

Poole, BH14 8DS

£1,250 PCM



****SHORT TERM LET - AVAILABLE FOR 2-3 MONTHS ONLY****

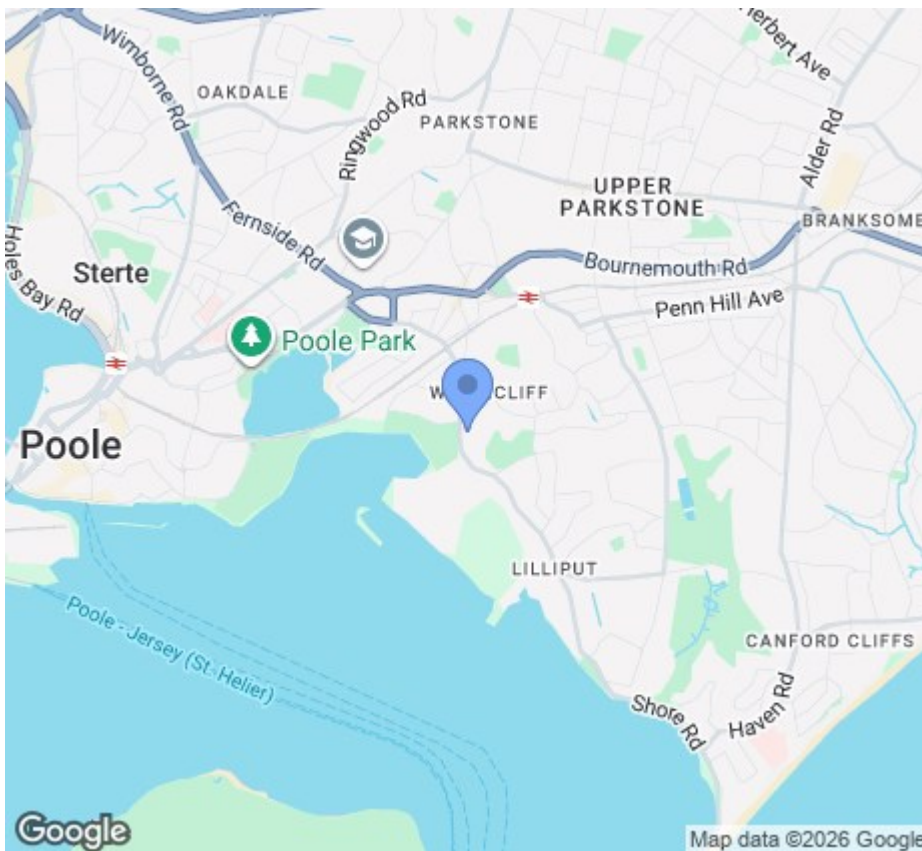
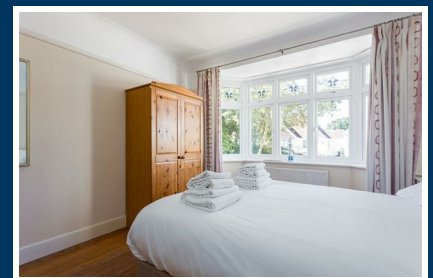
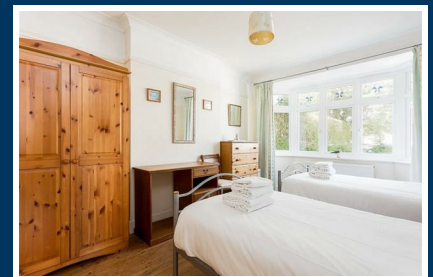
A two-bedroom bungalow in Whitecliff, close to the park and the beautiful blue flag sandy beaches on Sandbanks. Traditional holiday property in a great location with the benefit of a pretty south-facing rear garden with decking and seating - perfect for al fresco dining.

Entrance porch leading to hallway and all rooms. Open plan living room and dining room. Large corner sofa, fire place and dining table. Double doors leading to rear garden with large decking area with outside seating and steps down to the south-facing garden. Separate fully fitted kitchen with gas hob, electric oven, tall fridge / freezer, dishwasher, microwave and washer / dryer machine. Door leads out to garden. Master bedroom (4ft 6ins standard double bed). Second bedroom (2x 3ft single beds). Family bathroom (bath with shower over, sink and toilet).

Parking – up to two vehicle to the front of the house.







Energy Efficiency Rating		
	Current	Potential
Very energy efficient - lower running costs		
(92 plus) A		
(81-91) B		
(69-80) C		
(55-68) D		
(39-54) E		
(21-38) F		
(1-20) G		
Not energy efficient - higher running costs		
England & Wales EU Directive 2002/91/EC		

Agent Note: Whilst every care has been taken to prepare these sales particulars, they are for guidance purposes only. All representations including descriptions, dimensions and photos are given, in good faith and are believed to be correct, but any intending purchaser should not rely on them as statements or representations of fact but must satisfy themselves as to their correctness. Appliances and central heating systems have not been checked by Quay Living or their employees and we recommend that purchasers instruct a qualified person to check all appliances / service before legal commitment.



01202 683444
Orchard Plaza, 41 High Street
Poole, Dorset, BH15 1EG
www.quayliving.co.uk

